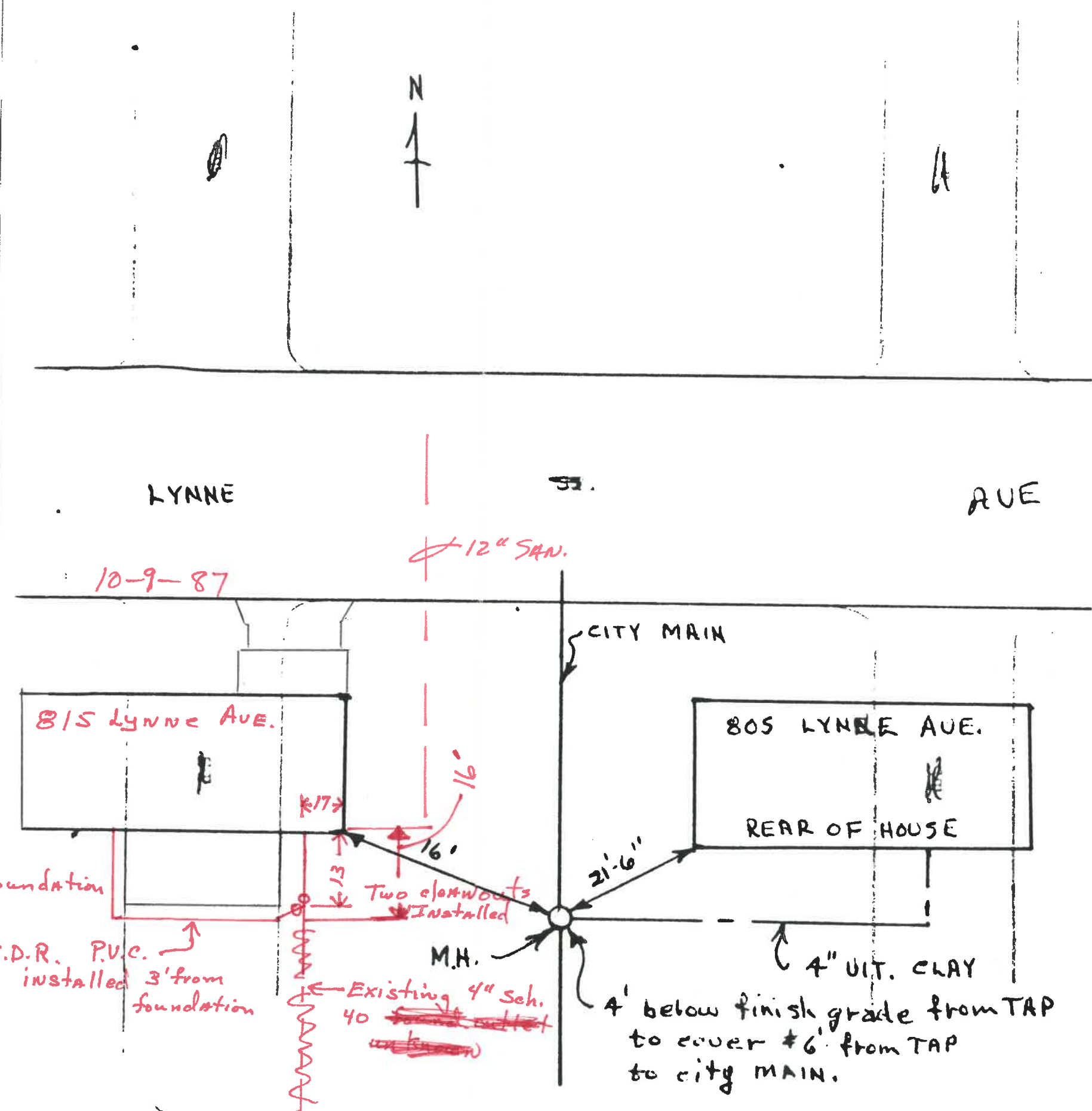


Res # 815
Lynne St.

Installer: Bob Cordes
Installed: 2-6-01
Materials used
4" SOR³⁵

LYNNE ST.

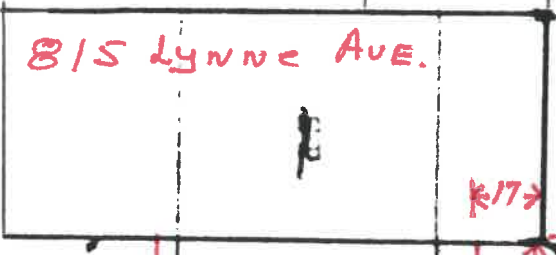
OK
Ex. M. H.
5/5



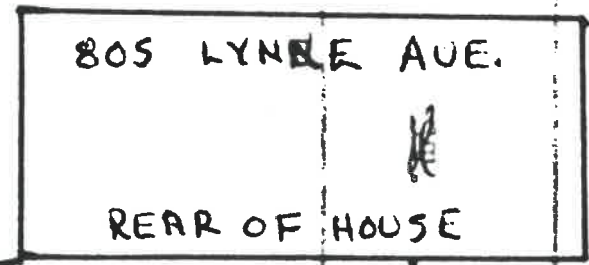
10-9-87

12" SAN.

CITY MAIN



815 LYNNE AVE.



805 LYNNE AVE.

REAR OF HOUSE

2' from foundation

New 4" S.D.R. P.V.C. installed 3' from foundation

R17

13'

Two cleanouts installed

M.H.

Existing 4" Sch. 40 ~~sewer~~

21'-6"

4" U.T. CLAY

4' below finish grade from TAP to cover #6' from TAP to city MAIN.